

CX 3240

Creative Duplex Printer

*Explore boundless possibilities
with borderless printing*



- 1** Designed for on-site photo specialty product production
- 2** Automatic double-sided printing for thick paper with easier operation
*When using paper recommend by FUJIFILM
- 3** Borderless prints without any post production trimming
- 4** A versatile array of advanced printing features ideal for greeting cards

Lots of different types of cards, photobooks and calendars can be easily created on-site

A versatile array of advanced printing

- Print on thick paper (324 gsm)
- Print on paper with special shapes (rounded corners or scalloped)
- Use papers with unique surfaces (satin or linen)
- Duplex printing of small-size cards is possible (for 3.5 x 5 in., 4 x 6 in., 5 x 7 in. and 4 x 8 in.)

Up to five paper trays make it easy to switch between sizes and weights to create a wide variety of products.



Borderless printing available

The FUJIFILM CX 3240 enables you to quickly and easily create borderless, double-sided pages for a variety of cards, photobooks, and more, providing the kinds of products your customers demand.

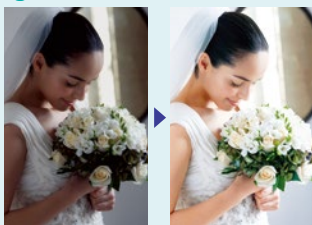


The above are simulated images



Fujifilm's high quality images

Excellent color reproduction, the same as Frontier systems, can be achieved. Automatic adjustment by our proprietary image processing technology Image Intelligence™ is also available*.



*Only with software that supports Image Intelligence™



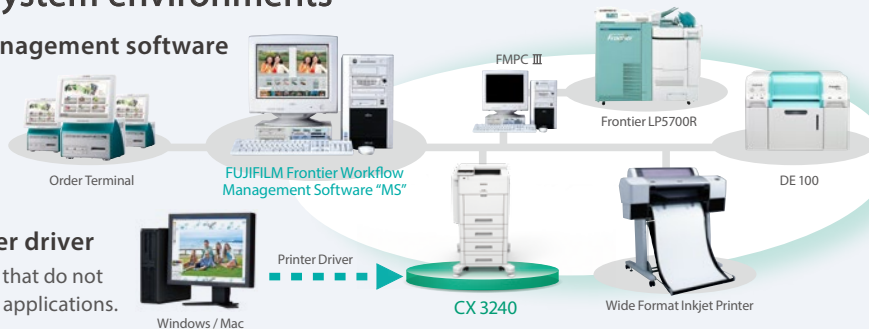
Automatic double-sided printing enables easy creation of greeting cards, photobooks and calendars.

Catering to a wide range of system environments

Connection with Fujifilm's workflow management software

The FUJIFILM CX 3240 can be efficiently operated & managed together with Frontier printers like the Frontier DE100 with FUJIFILM Frontier Workflow Management Software "MS".

*MS optional software MPS is required.



Connection through the standard printer driver

The FUJIFILM CX 3240 can be connected to systems that do not use MS, enabling network printing from a variety of applications.



FUJIFILM CX 3240 Creative Duplex Printer

Printing Method	LED Xerography
Print Resolution	1200 x 2400 dpi
Print Speed	<ul style="list-style-type: none"> • 1 Sided A4: 23 sheets/minute, letter: 24 sheets/minute • 2 Sided A4: 22.6 sheets/minute, letter: 23.6 sheets/minute
Paper Sizes	A4, Letter, 7" x 10", 4" x 8", 5" x 7", 3.5" x 5" Custom: Width 88.9 mm to 215.9 mm (3.5" to 8.5"), Length 127 mm to 355.6 mm (5" to 14")
Paper Weight	Trays 1 to 4: 140 to 324 gsm, Bypass trays: 140 to 220 gsm
Dimensions (WxDxH) & Weight	470 x 540 x 443 mm (18.5" x 21.2" x 17.5"), 39 kg (with toner cartridges)
Power Supply	AC 100-127V (50/60Hz), 12A; or AC 220-240V (50/60Hz), 5A

Environment (for best image quality)	Temperature: 15°C to 28°C, Humidity: 20% to 70%
Durability	300K sheets (A4) or 5 years, whichever comes first
Connectivity	Device Port x 1 (USB 3.0), Ethernet 10/100/1000 Base-T
Consumables	Toner Cartridges: Cyan, Magenta, Yellow, Black Drum Cartridges: Cyan, Magenta, Yellow, Black Waste Toner Cartridge
Routine Maintenance Items	Fusing Unit, Transfer Roller, Maintenance Kit (including the belt unit), Paper Roller

Descriptions and/or printer specs in this material are subject to change without prior notice. FUJIFILM CX3240 Creative Duplex Printer is only available from FUJIFILM. FUJIFILM® is a trademark of FUJIFILM Corporation. Other product names are the trademarks or the registered trademarks of their companies.



FUJIFILM Corporation

7-3, AKASAKA 9-CHOME, MINATO-KU, TOKYO 107-0052, JAPAN